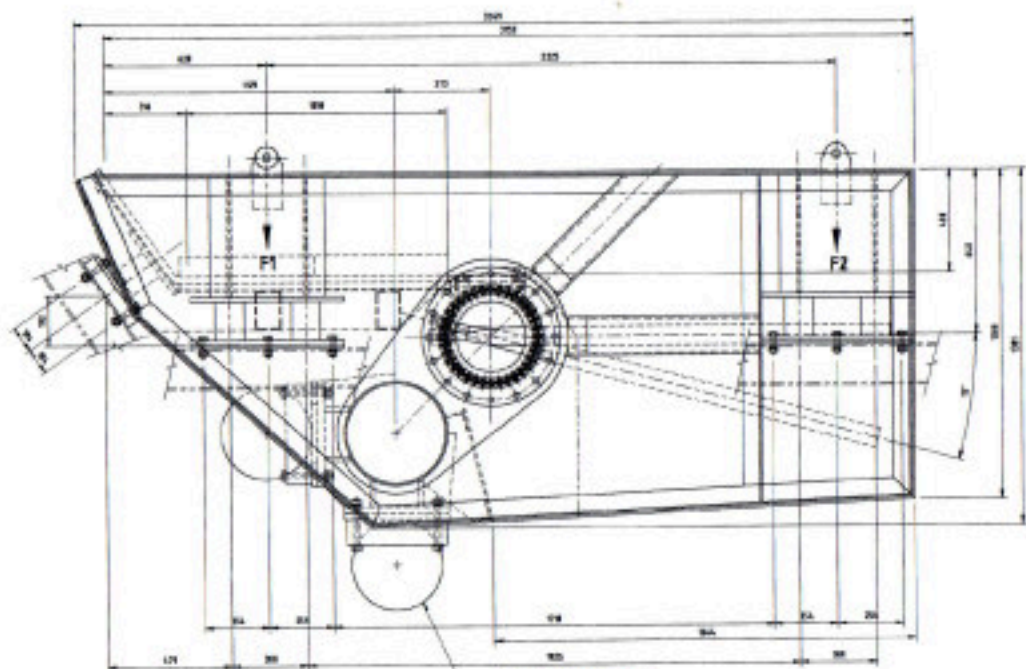


Image 1

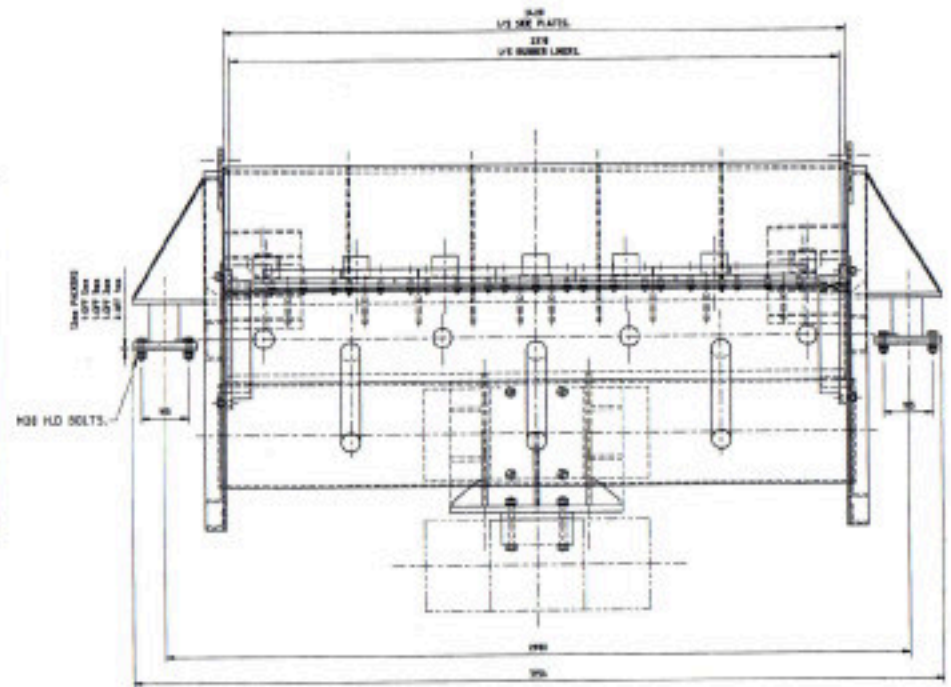


3-HPF ITALVIBRAS MODEL  
HVR 16/100-570  
DROTER, HP, 7.5 kW

EACH MOTOR IS SUPPLIED FITTED  
WITH 1.8m OF FLEXIBLE CABLE.

FEEDING CABLE TO MOTOR TERMINAL  
HEADS TO BE FLEXIBLE FOR 300mm MIN.

MOTORS TO ROTATE IN OPPOSITE DIRECTIONS.



**NOTE:**  
NATURAL FREQUENCIES OF SUPPORT MEMBERS  
SHOULD BE AT LEAST EQUAL TO THE FOLLOWING  
PRIMARY MEMBERS 1.5 x OPERATING SPEED  
SECONDARY MEMBERS 1.5 x OPERATING SPEED.

**OPERATING CLEARANCES:**  
VERTICAL 75mm  
HORIZONTAL 75mm  
LATERAL 35mm

FEEDER LOADS PER CORNER			
	STATIC MAX.	OPERATING @ 1000PPH	RESONANCE @ 1-300 RPM
FEED END	VERTICAL 8.550KN	+1.00KN	+11.00KN
	HORIZONTAL -	+0.24KN	+0.16KN
DISCHARGE END	VERTICAL 8.550KN	+1.00KN	+11.00KN
	HORIZONTAL -	+0.24KN	+0.16KN

TOTAL MACHINE MASS = 2100 kg APPROX  
WEIGHTING STROKE @ 500 RPM = 8.1mm PER MIN. SETTING  
MAX STATE MATERIAL LOAD = 3300 kg

This drawing and all the information hereby contains the property of BHP Billiton and should not be used or reproduced in any way without the written permission of BHP Billiton. It is to be used for the purpose of construction only and should not be used for any other purpose. It is to be used for the purpose of construction only and should not be used for any other purpose. It is to be used for the purpose of construction only and should not be used for any other purpose.

NO.	DESCRIPTION	DATE	BY	CHECKED	APPROVED
1	ISSUED FOR CONSTRUCTION	11/12/01	...	...	...
2	GENERAL REVISION	...	...	...	...
3	ISSUED FOR CONSTRUCTION	...	...	...	...
4	GENERAL REVISION	...	...	...	...
5	ISSUED FOR CONSTRUCTION	...	...	...	...
6	GENERAL REVISION	...	...	...	...

For information only  
"NOT FOR CONSTRUCTION"

LUKA RESOURCES LIMITED

CVR CRUSHING EQUIPMENT			
NAIRN CONCENTRATOR DIVERGING BAR GRIZZLY FEEDER GENERAL ARRANGEMENT			
SCALE	PLANT NUMBER	DRAWING NUMBER	SECTION
1:10		DVD1-M-01	0