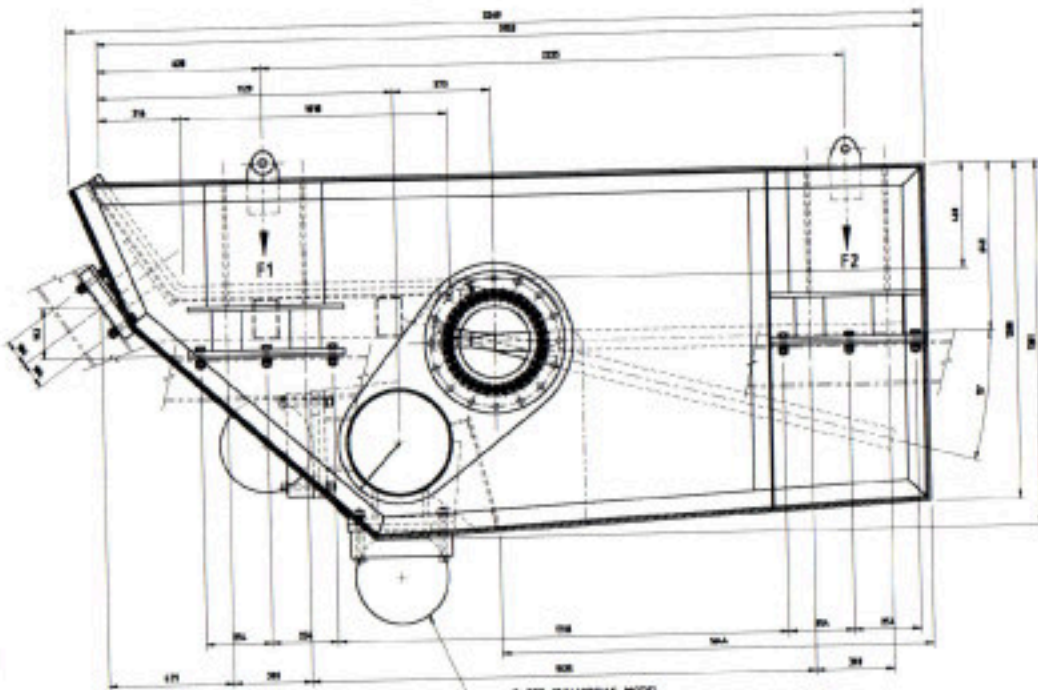


Image 3

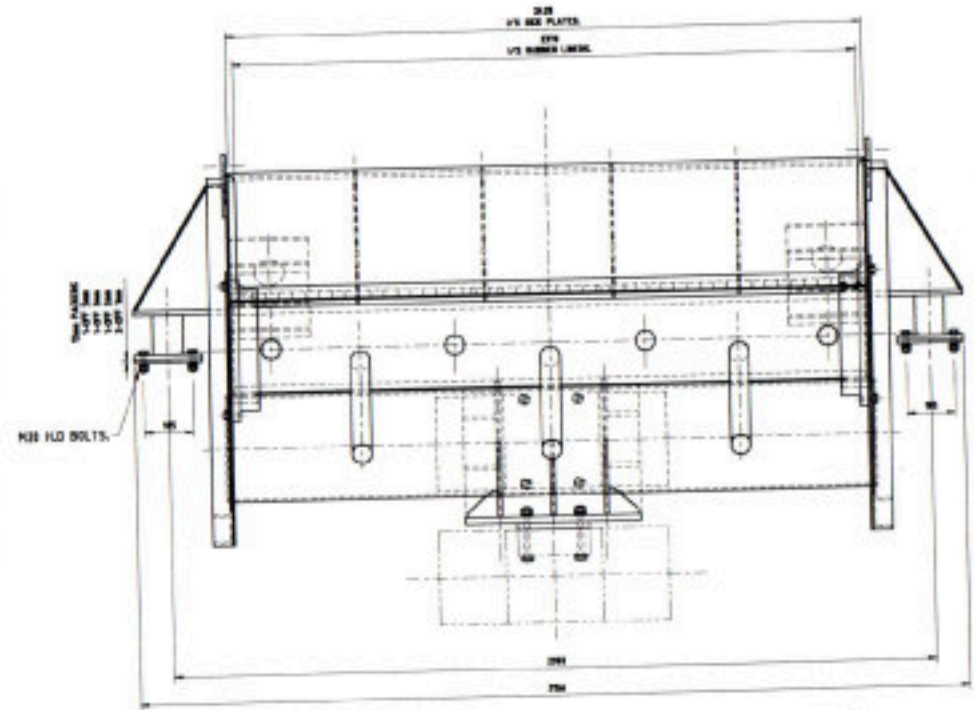


3-OFF ITALVIBRAS MODEL  
MSV 10/1100-518  
EXCITER, HP, 2.5 kw

EACH MOTOR IS SUPPLIED FITTED  
WITH LINE OF FLEXIBLE CABLE.

INCOMING CABLE TO MOTOR TERMINAL  
BOXES TO BE FLEXIBLE FOR 180° SW.

MOTORS TO ROTATE IN OPPOSITE DIRECTIONS.



**NOTE:**  
NATURAL FREQUENCIES OF SUPPORT MEMBERS  
SHOULD BE AT LEAST EQUAL TO THE FOLLOWING:  
PRIMARY MEMBER 2.5 x OPERATING SPEED  
SECONDARY MEMBERS 1.5 x OPERATING SPEED.

**OPERATING CLEARANCES:**

VERTICAL 75mm	FEED END
HORIZONTAL 75mm	DISCHARGE END
LATERAL 35mm	

**FEEDER LOADS PER CORNER.**

STATIC MAX.	OPERATING @ 2000 RPM	RESONANCE @ 2-2000 RPM
VERTICAL 18.5KN	V/LINER 18.2KN	11.8KN
HORIZONTAL -	V/LINER 18.2KN	12.4KN
VERTICAL 4.35KN	V/LINER 11.2KN	16.2KN
HORIZONTAL -	V/LINER 18.2KN	14.4KN

TOTAL MACHINE MASS = 2100 kg APPROX  
VIBRATING STROKE @ 2000 RPM = 8.5mm @ 80% SETTING  
MAX STATIC MATERIAL LOAD = 3100 kg

This drawing and all the information contained herein are the property of Kura Resources Limited and shall not be used or copied in any way without the written consent of Kura Resources Limited. It is the responsibility of the user to ensure that the information is used in accordance with the intended purpose and that all necessary precautions are taken to ensure the safety of the user and the equipment. Kura Resources Limited is not responsible for any damage or loss resulting from the use of this drawing.

NO.	REV.	DATE	BY	CHKD.	APP.	DESCRIPTION
1		11.12.01	PK			ISSUED FOR CONSTRUCTION
2		11.12.01	DS			ISSUED FOR CONSTRUCTION
3		11.12.01	PK			ISSUED FOR CONSTRUCTION

For information only  
**"NOT FOR CONSTRUCTION"**

KURA RESOURCES LIMITED

**CVR CRUSHING EQUIPMENT**  
NAIRN CONCENTRATOR  
DIVERGATING BAR GRIZZLY FEEDER  
GENERAL ARRANGEMENT

SCALE	PLANT POSITION	ISSUED NUMBER	REVISION
1:10		DVD1-M-01	B